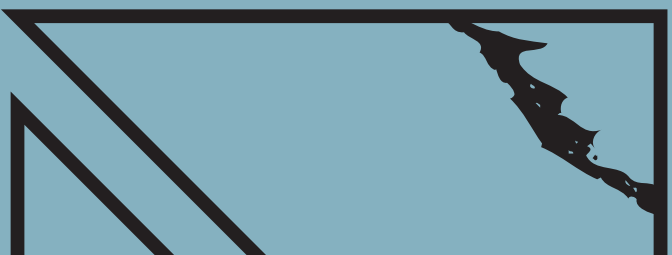
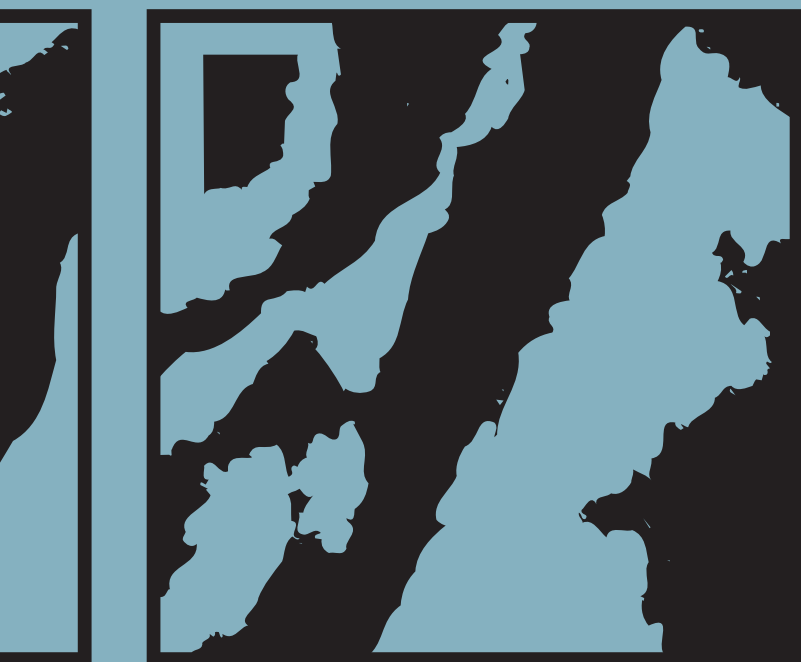
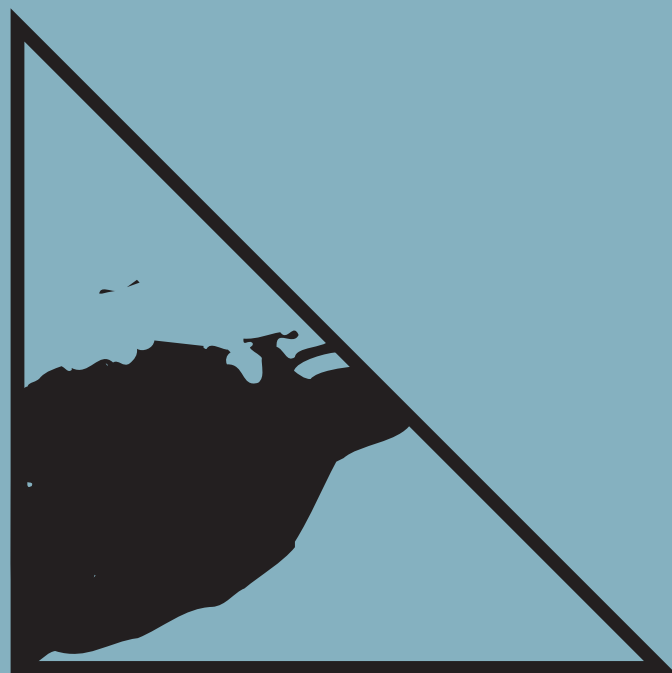
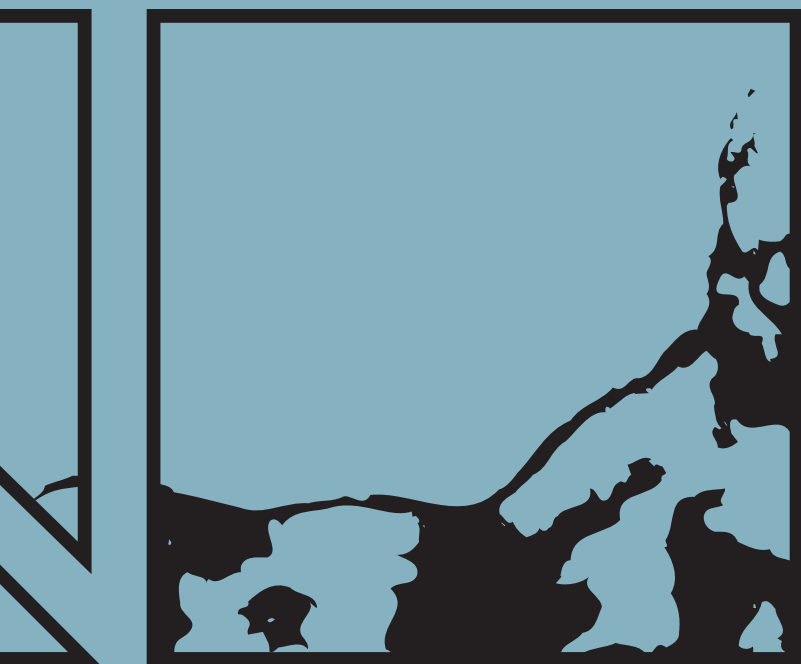




**ROCAMAT**  
Pierre Naturelle



# French elegance

## Since 1853

We are a major player in the production of construction stone on the international scene and the leading producer of natural stone in France.



Euville quarry

## French Touch

**All our quarries and production facilities are located in France** where we manufacture products with natural stone for the construction and decoration of your building projects. Our production plants, with a long heritage of traditional know-how, regularly undertake projects in **cut-to-size stone**.

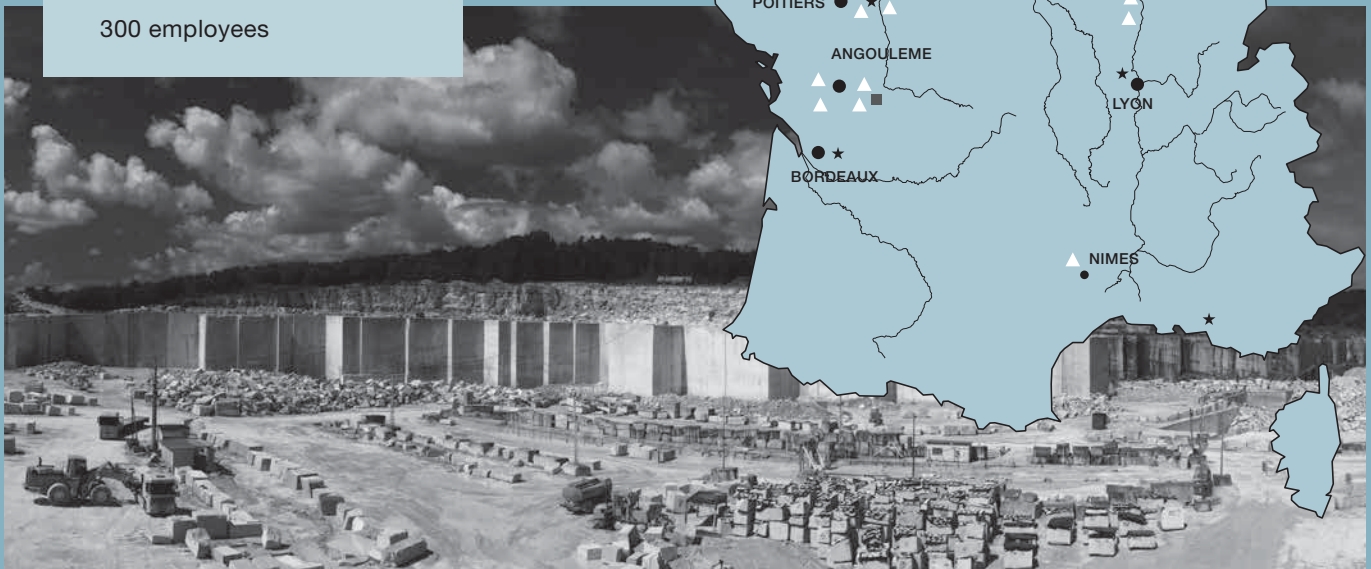
Buying a ROCAMAT product made in France is not only your **guarantee of compliance with the finest quality social and environmental standards** but also contributes to keeping jobs in rural areas.

ROCAMAT has already contributed to **French elegance** with a number of prestigious achievements : Orsay Museum, Grand Louvre, Finance Ministry at Bercy, the Louis Vuitton Foundation, Orthodox Church, Palais de Chaillot.... and also on the international scene: The Metropolitan Museum of Art in New York, Stanford University, the British Museum in London, the Brazilian British Centre in Sao Paulo, the Head Office of SAMSUNG in Seoul, the Ritz Carlton Hotel in Dubai, the Bank of Luxemburg in Luxemburg, the Plaza Grand Hotel in Singapore, etc.

### Our facilities

- ▲ 30 limestone quarries  
30 000 m<sup>3</sup> of blocks a year
- 5 processing plants
- ★ showrooms

300 employees



Massangis quarry



**In the stone**

Massangis Beige Clair





## Natural elegance



Quarry of Tercé – Normandoux redeveloped into a hotel and tourist lodges.

### 100% natural stone

The cost in terms of energy for the production and implementation of this **long-lasting, recyclable and healthy material** is particularly low. Stone forms an ideal component in the pursuit of sustainable development and for HQE (**H**igh **E**nvironmental **Q**uality) construction projects. Stone is a natural material which offers a wide and varied range of resources. It is the prime component of the earth's crust which classifies it as one of our unlimited resources.



ROCAMAT products can already be found in **HQE** and **BREEAM** projects: The offices of EPSILON in Villeurbanne, the 3 and 4 Millennium Ministry of Justice in Aubervilliers, the Quebec offices at Orly. **Stone can easily be adapted to meet the requirements of the French new Thermal Regulation.** Our products have been used in projects for Low Consumption Buildings such as the Cours Saint Amour in Besançon, the Montretout Villa in Saint Cloud or a housing complex rue de la Pompe in Paris, but also in the very first **positive energy building** in the suburbs of Lyon, the Julie Victoire Daubié school.



**The composition of stone is 100% natural and mineral, giving the assurance of a healthy building** without any emission of volatile pollutants as guaranteed by the **A+ ranking of our materials.** Natural stone does not release any harmful chemical components into the atmosphere either during production or when it is used.

The regional coverage of our facilities enables us to **reduce transport from plant to worksite**, thereby producing **up to 10 times less CO2**, a distinct environmental advantage for French stone compared to imported products.

### A green industry



The working of stone does not require any stoving or chemical additive. **Construction in solid stone is a viable, low-energy alternative with low CO2 emissions in comparison to walls built in concrete.**

For all our quarries, we implement a development programme for the site both during and at the end of their exploitation. The implementation of that commitment is backed by a system of financial guarantee under the control of the Regional Directorate for the Environment, Development and Housing (DREAL).



Block of rough stone

# Stone to create

## From the quarries

Whether you are a stone mason or a marble compagny, you will find in our product range the majority of the historical French names from our main limestone quarries.

Our stone is generally available in the form of **rough blocks** for both new buildings and for the restoration of **Listed Monuments**. We hold a stock of **thin slabs** and can easily supply you with **thick slabs**. All of our plants are equipped to meet local requirements in **6-sided sawn blocks**.



Sireuil Quarry



Blocks



Slabs



6-sided sawn blocks

Each one of our different stones bears witness to our architectural heritage :

- Saint-Maximin, Euville, Savonnières, Comblanchien, the Paris of Baron Hausmann,
- Sireuil, the stone of Bordeaux,
- Lens, the Square House in Nîmes, the Saint Charles railway station in Marseille,
- Massangis, the stone of Burgundy, is the cladding of the Palais de Chaillot and of the Eiffel Tower in Paris,
- Tuffeau, the region of Tours and the Châteaux of the Loire Valley,
- Saint Nicolas, for the facade of the Opera House in Paris.



Garnier Opera / Paris



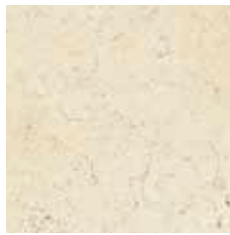
## Material for creation



Anstrude



Balzac Classique



Balzac Fleuri



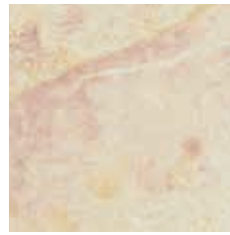
Bleu de Lignières



Buxy Bayadère

Buxy Gris Jaune  
Cendré

Charmot

Chassagne  
Beauharnais

Chassagne Beige Rosé



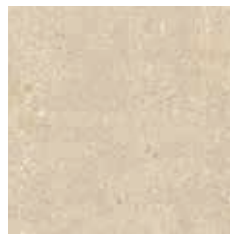
Chauvigny Classique



Comblanchien Clair

Comblanchien  
Légèrement Moucheté

Comblanchien Ramagé



Euville



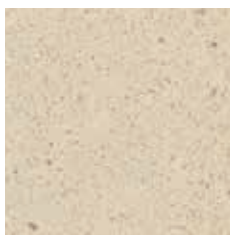
Fontbelle



Lens



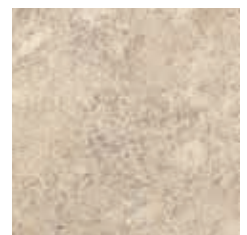
Massangis Beige Clair



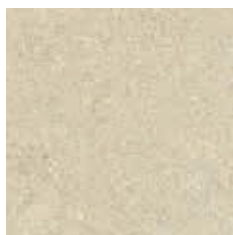
Massangis Clair Nuancé



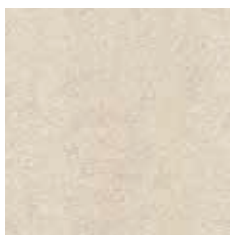
Massangis Jaune



Massangis Jaune Clair



Pouillenay Beige



Richemont Blanc



Richemont Bleu



Richemont Jaune



Roche de Sireuil

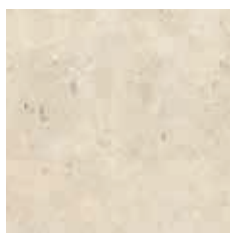
## Material for creation



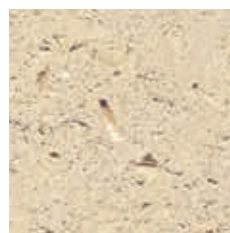
Rocherons Doré



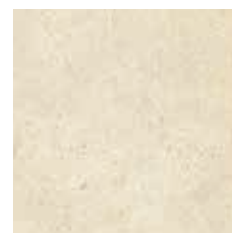
Rocherons Doré Clair



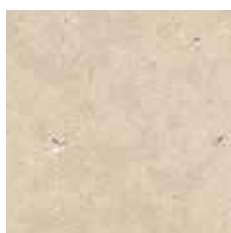
St Leu



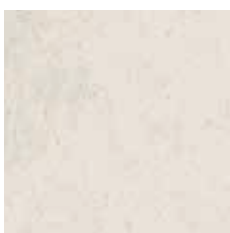
St Maximin Franche  
Construction



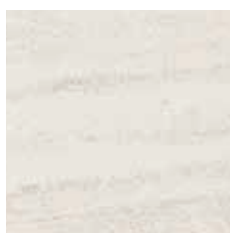
St Maximin Franche  
Fine



St Maximin Liais



St Nicolas Clair



St Nicolas Rubané



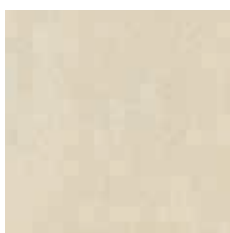
St Vaast



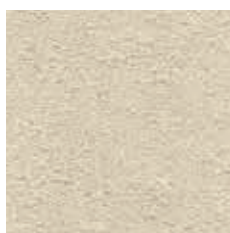
Savonnières



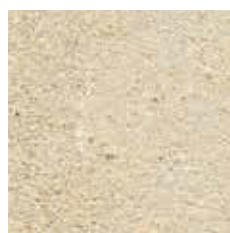
Sébastienopol  
Construction



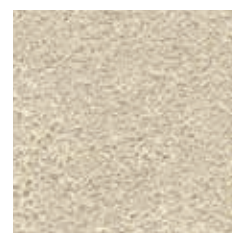
Sébastienopol Fine



Sireuil Beige



Sireuil Doré



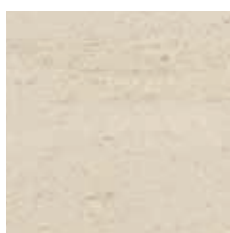
Sireuil Doré Fin



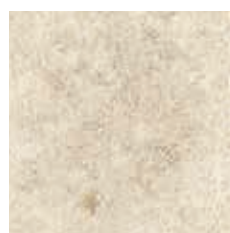
Tervoux



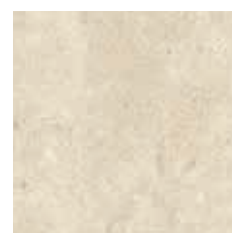
Tuffeau



Valanges



Vilhonneur Bercy



Vilhonneur Classique

ROCAMAT, PIERRE NATURELLE



Bank of Luxembourg / Luxembourg – Architect : ARCHITECTONICA & Christian Bauer & Associés



## Our Products ready to build

Our standard products are available from stock and can be delivered to your worksite within 15 days.



### PAVING

A range of natural limestone for outdoor paving or indoor flooring.

The rectangular formats are ideally suited to contemporary homes. In contrast, the Opus Romain or Versailles patterns are just made for more classical settings.

Colours range from light to medium beige, from pale to deep blue with a red-orange trim.



### WALL

A range of natural limestone for your indoor and outdoor walls.

We can offer a host of formats in tiles, small stone brick and strip stone to best suit your style of decoration.

Thanks to the variety of our quarries, we can offer a very wide range of colours and textures to match the area where you live.



### GARDEN

A product range for the embellishment of your outdoor area and garden.

This range comes in two colours: the BOURGOGNE products in beige and the VIGNOBLE products in pink grey.

Each colour includes a paving stone, a tread, a threshold, a border, copings and their corner stones which will each find a place in your garden.

All our standard products brochures catalogues can be downloaded on our website [www.rocamat.fr](http://www.rocamat.fr)





# Indoors and Outdoors

## Indoor flooring and outdoor flagstones

**The choice of stone flooring** offers an extensive range of shapes and sizes with simple upkeep, high wear resistance, a long-lasting patina and the possibility of a **matching staircase or accessories**.

Our range of stones gives you the possibility of matching your flooring to all kinds of use. The table on page 13 will guide you in making your first selection depending on the place and use you envisage.

Observance of all the rules of the art at the time of installation guarantees the long-lasting quality of our products. They are described in the **French Technical Document 52.1 for mortar bedded laying and 52.2 for adhesive bedded laying**.

Stone flagging can also be laid on pedestals by calculating the necessary thickness and on heated flooring taking care to separate it from the base support.

Outdoors, care must be taken to choose the right stone according to the climate of the region and to perfectly manage the run-off of rain (slope, drainage underlay and gutter).



Private property



Private garden

## Urban development

For your urban development projects, ROCAMAT offers a complete range of standard and customised products.

**The Rocherons-Comblanchien stone** is the basic product in this range. This material is quarried and processed in the Côte d'Or region. This Burgundy limestone meets all the necessary technical requirements for road works applications. Its light colour lends a luminous appearance to your projects and stands out against the classic greys.

Our production capacity enables us to meet the needs of any size of job. Our achievements include the tramway in Dijon, the heart of the downtown of Poitiers, the development of town centres in Bourges, Troyes and Vincennes, the pedestrian district and boulevards in Valence, etc.



Tramway / Dijon



Town center / Valence

## Our cladding systems

### VET2, Stone insulating siding



School complex Joseph Brenier / Saint Priest  
Architect : Atelier Totem Architecture 603

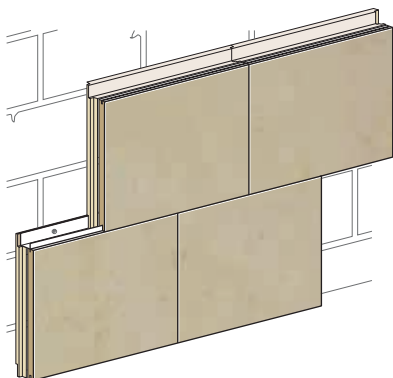
VET2 is a siding system with a 20 mm thick wall in natural stone bonded to insulation in high density expanded styrofoam 60 mm to 100 mm thick. The thermal resistance (R) of the system varies from 1.58 to 2.63. The horizontal edges of the stone are grooved in our plant.

The slabs are slot mortised on aluminium rails that are pinned to the substructure through the insulating material.

This siding benefits from a Technical Notice from the CSTB.



County archives of Le Mans



VET2 installation system

### ROCACLIP, an innovative natural stone wall



Chrystal Park / Neuilly-sur-Seine  
Architect : Valode & Pistre

ROCACLIP combines natural stone panels (20/40mm thick, 1,5m<sup>2</sup>/slab, max. length 1,41m), grooved in our factory and clamped on to an aluminium substructure using stainless steel clips. This substructure is itself fitted to the concrete construction or masonry. ROCACLIP accommodates every type of exterior insulation and is suited to all kinds of renovation work or new building projects.

ROCACLIP offers the elegance of natural stone with advantages thanks to its industrial process: fast and accurate installation, safe permanent fittings and easy replacement of panels without having to remove those in place.

This vogue for natural stone is understandable given its numerous qualities. Stone is a natural and noble material that can be integrated perfectly into an HQE (High Environmental Quality) approach.



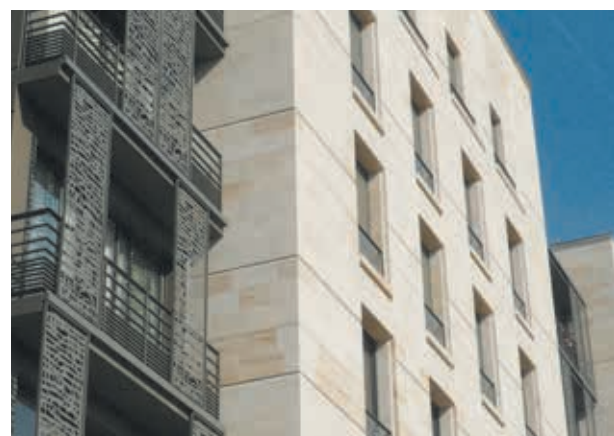
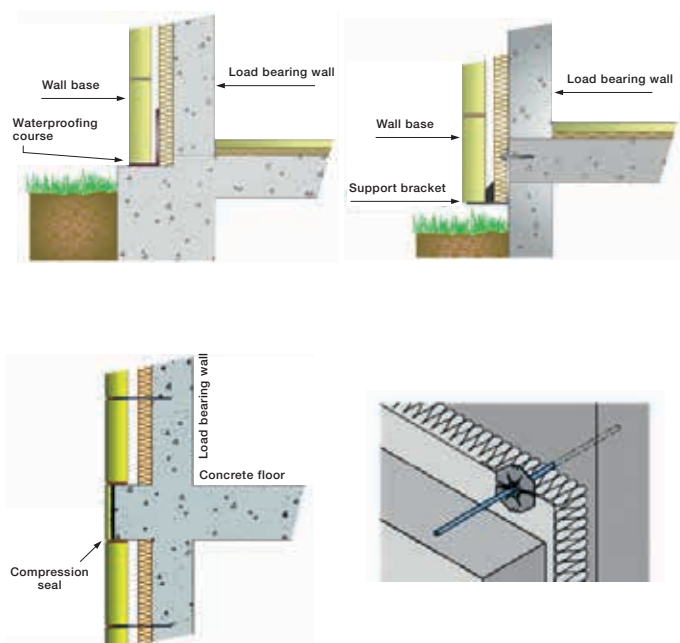
ROCACLIP installation system

# Cladding with Outside Thermal Insulation (OTI)

## Self-Supporting 8 cm thick

The self-supporting facings consist of ashlar rubble or cut stone installed in bonded courses. The thickness varies from 8 cm to 10 cm. Their stability with respect to misalignment is ensured by fastenings fitted to the load-bearing wall. This type of design makes it possible to build **walls with all the appearance of solid stone** but which are relatively thin. It also offers the advantage of enabling outside thermal insulation.

### Block diagram



Ilot Bonnac / Bordeaux  
Architect : Buffi associés

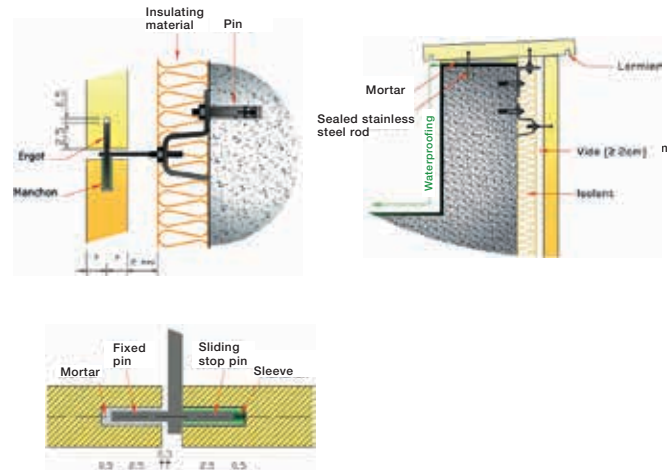
## Fastening with OTI

Fastened stone makes it possible to construct wall facings consisting of stone slabs fixed to a concrete or masonry substructure. A ventilated air gap is made between the rear face of the slabs and the insulating material fixed to the support. **The thickness of the insulating material is generally 15 cm and can reach up to 28 cm.**

The stone slabs, generally 3 cm thick, can have an area of 1 m<sup>2</sup> with one of their sides equal to 1.40 m if allowed by the sizing calculations for wind resistance.

The fastenings consist of stainless steel cleats, adjustable in all three directions. They are fitted to the support by metal pins. Apart from exceptional cases, there are four cleats per slab, sized to ensure load bearing and wind resistance. The slab is fixed to the cleat by the penetration of a stainless steel stop pin in a larger diameter hole through the edge of the slab.

### Block diagram



Apartments Richard Lenoir / Paris  
Architect : Vincent Eschaliér



## Architectural projects

Natural stone provides architects with a range of colours that no other standard manufactured product can reproduce. Our industrial facilities enable us to be present on all major worksites while maintaining the capacity to produce the tailor-made elements you have designed.



Fleur de Lys / Los Angeles  
Architect : Richardson & Robertson

**Our teams remain at your entire disposal to assist you throughout your project.** We will enable you to make the most of all the richness of natural stone for both classical and contemporary designs.

• Upstream, **our Geologists and quarry Technicians** are your guarantee of the availability of the necessary material,



• **Our Sales and Consultancy teams** will help you choosing the most appropriate suitable products for your project,



• **Our Installation Division** can provide you with advice on implementation,

• Colour prototyping will be handled with **our Production Plants**,



• **Our Project Management Services** will ensure the proper progress of your worksite.



Fondation Louis Vuitton / Boulogne - Billancourt  
Architect : Frank Gehry

## Innovate with stone



Sound-proofing stone and insulation

Thanks to modern techniques, stone can today be adapted to new uses and find its place in innovative projects.

Thanks to digital techniques, you can design complex shapes and build modern, structural complexes.

We work by material removal which enables us to create unique parts and enables you to forget the notions of mass production specific to artificial materials.



Customised shaping

Present us what you dream of doing with stone and we will innovate together. We benefit from flexible industrial facilities and technical teams which enable us to adapt to the specific features of your project.



Reproduction of your models



Adaptation to your anchoring systems



Digital engraving



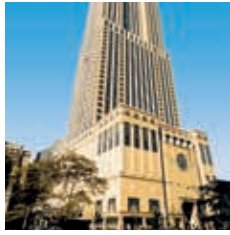
Customised packing, labelling and logistics



## Dream of stone



Apartments  
/ Amiens  
Architect : Cabinet Huet



900 North Michigan  
/ Chicago  
Architect : Kohn Pedersen Fox Associates (KPF)



Brazilian British Centre  
/ São Paulo (Brazil)  
Architect : Botti & Ruben



Château Louis XIV  
/ Louveciennes  
Developper : Cogemad



China Petroleum Company  
/ China



Feet of the Eiffel Tower  
/ Paris  
Engineering consulting firm:  
Séchaud & Bossuyt



Apartments  
/ Paris  
Architect : Lenne-Haziza



Private Residence  
/ New York



The Gores Group  
/ USA  
Architect : Belzberg



Haddad Residence  
/ New-York



Private Residence Huawei  
/ Beijing (China)



Katzen Arts Center,  
Washington (USA)  
Architect : Einhorn Yaffee Prescott (EYP)



The St Marylebone  
CE School  
/ London



Philimores  
/ Great Britain



Le Grand Louvre  
/ Paris  
Architect : I.M. Pei & Macary



Apartments Richard Lenoir  
/ Paris  
Architect : Vincent Eschallier



Hotel Ritz Carlton  
/ Dubaï (United Arab  
Emirates)



Residence  
/ Paris



British Museum  
/ Londres



Clarence House  
/ USA



Stock Exchange Centre  
/ Sydney (Australia)



Notre Dame de Cana church  
/ Troussures (France)



Tusmore Park  
/ Great Britain



Brazilian British Centre  
/ São Paulo (Brazil)  
Architect : Botti Rubin



Stanford University  
/ USA



# Uses of stone

Stones	Field cladding	Cladding for the wall base and projection	Solid walls for field cladding	Solid walls for the wall base and projection	Outdoor flooring	Indoor flooring	1. Private use 2. Medium traffic use 3. High traffic use 4. Streets
Anstrude	*****	**	*****	**	-	-	-
Balzac Classique	****	****	****	****	*****	*****	3
Balzac Fleuri	****	****	****	****	*****	****	2
Bleu de Lignières	*****	****	*****	****	-	**	2
Buxy Bayadères	****	****	****	****	**	****	2
Buxy Gris Jaune Cendré	****	****	****	****	***	****	3
Charmot	*****	**	*****	**	-	*****	2
Chassagne Beauharnais	****	****	****	****	-	****	3
Chassagne Beige Rosé	****	****	****	****	-	***	3
Chauvigny Classique	*****	****	*****	****	-	*****	2
Comblanchien Clair	****	****	****	****	*****	*****	4
Comblanchien Lég.Moucheté	****	****	****	****	*****	*****	4
Comblanchien Ramagé	****	****	****	****	*****	*****	4
Euville	*****	*****	*****	*****	*****	***	2
Fontbelle	***	***	*****	****	-	-	-
Lens	*****	*****	*****	*****	***	****	2
Massangis Beige clair	****	****	****	****	***	****	2
Massangis Clair Nuancé	*****	*****	*****	*****	***	*****	2
Massangis Jaune	****	****	****	****	****	***	2
Massangis Jaune Clair	****	****	****	****	***	****	2
Pouillenay	****	****	****	****	*****	*****	2
Richemont	***	***	*****	****	-	-	-
Rocherons Doré	****	****	****	****	*****	*****	4
Rocherons Doré Clair	****	****	****	****	*****	*****	4
St. Maximin Franche Const.	*****	*****	*****	*****	***	***	-
Saint Maximin Franche Fine	*****	*****	*****	*****	-	-	-
Saint-Maximin Liais	****	****	****	****	***	***	3
Saint-Nicolas	*****	**	*****	**	-	-	-
Savonnières	****	****	*****	*****	-	-	-
Sébastopol Construction	***	***	*****	****	-	-	-
Sébastopol Fine	***	***	*****	****	-	-	-
Sireuil	***	***	*****	****	-	-	-
Sain-Vaast	***	**	*****	**	-	-	-
Saint-Leu	***	**	*****	**	-	-	-
Tervoux	***	***	*****	*****	-	-	-
Tuffeau	**	**	*****	****	-	-	-
Valanges	*****	**	*****	**	-	***	1
Vilhonheur Classique	*****	*****	*****	*****	-	****	2
Vilhonheur Bercy	*****	****	*****	****	-	**	1

\*\* to \*\*\*\*\* Depending on usage and regions of use



[www.rocamat.fr](http://www.rocamat.fr)



# ROCAMAT

## Pierre Naturelle

Head office :

ROCAMAT pierre naturelle  
58 quai de la marine  
93450 L'Île Saint Denis  
+ 33 (0) 1 49 33 26 00  
[export.departement@rocamat.fr](mailto:export.departement@rocamat.fr)